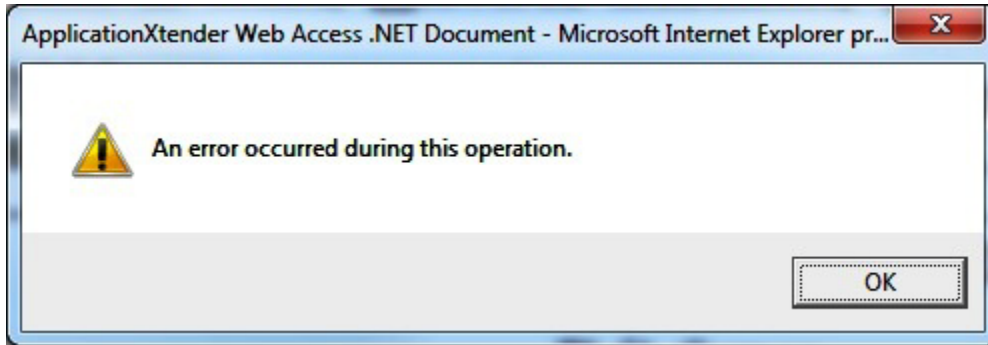
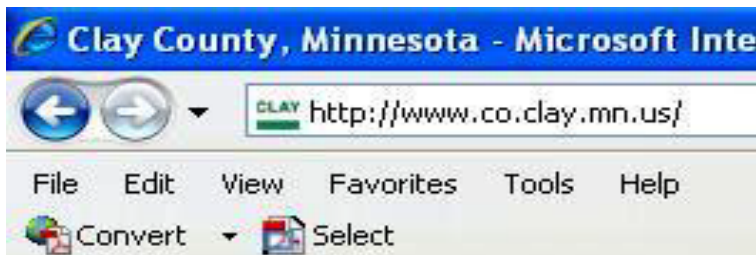


If you receive the message below when printing, a solution may be to place the web address in the Trusted sites.



To do this:

In your web browser, select the **Tools** Tab along the top left of the page:



Under **Tools** select **Internet Options**:



In **Internet Options** select the **Security** Tab:



Click on **Trusted sites** (in the **Select a zone...** area):



Click on the bolded titles to link to further information

Click the **Sites** Button (below the **Select a zone...** area)



In the **Add this website to the zone:** area enter **http://www.co.clay.mn.us**. Click the **Add** Button, click the **Close** Button, click the **OK** Button.

